

GENUINE  
**B-2**  
PARTS



**REPLACEMENT PARTS  
FOR BRUNSWICK  
A / A-2 STYLE  
PINSETTERS**

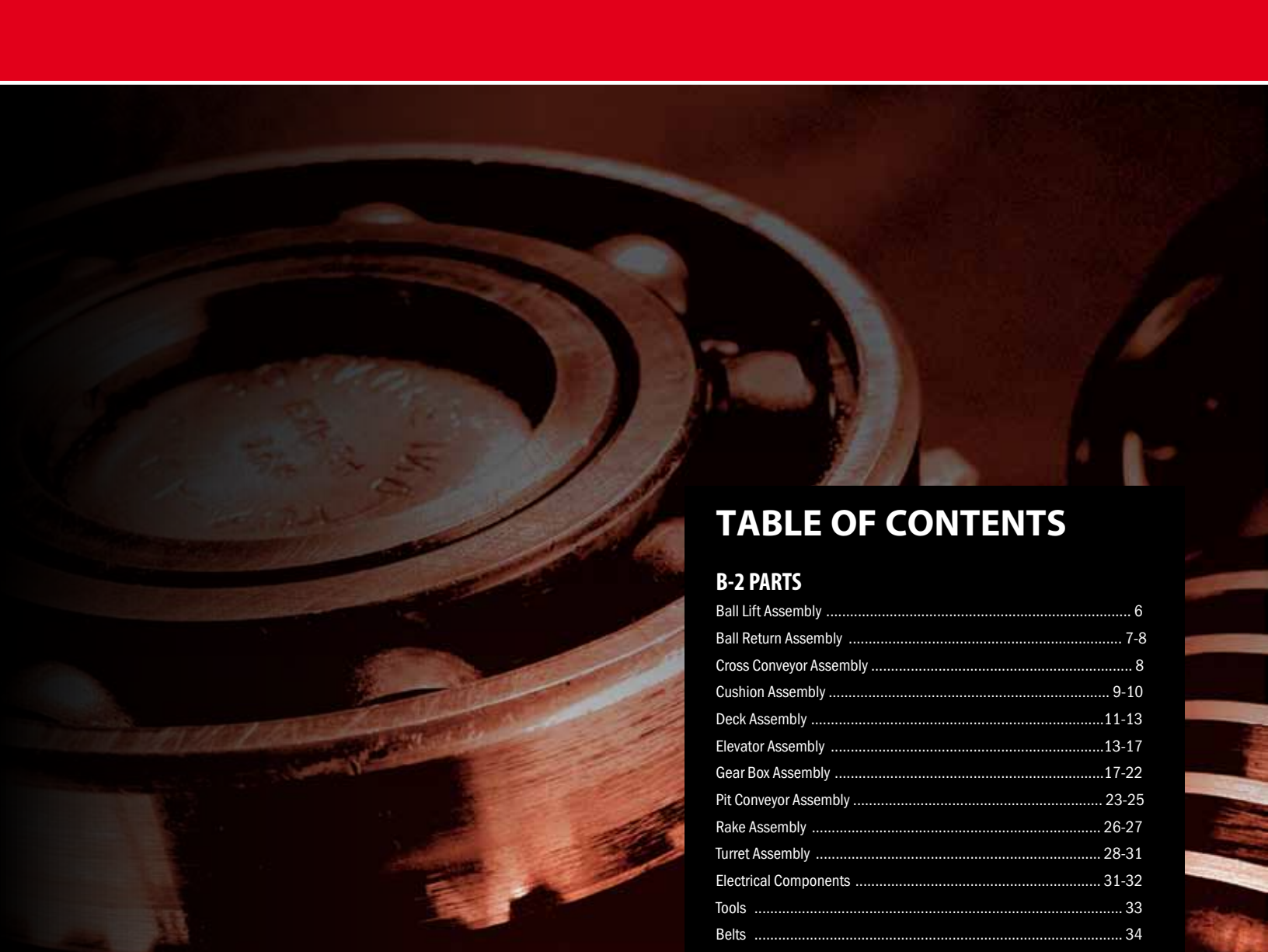
**THERE'S MORE  
THAN ONE WAY TO SAY  
"PREMIUM B-2 PARTS".**

**FOR EXAMPLE, WE ALSO SAY  
"100% MONEY-BACK  
GUARANTEE,  
NO QUESTIONS ASKED".**

You can be completely confident about buying replacement parts for Brunswick A/A-2 style machines from QubicaAMF. Just consider the following:

- We service the largest chain of bowling centers in the world – Our biggest customer - AMF Bowling Centers - is the largest user of replacement parts for Brunswick A/A-2 style machines in the world, operating over 8,000 lanes. These centers demand high quality, speedy delivery, and a good price - and get all three.
- We provide the best value for the money – Our B-2 parts meet or exceed their OEM specs. Many have the original made-in-the-USA design. Rigorous quality control and inspections plus “real world” testing give you added assurance.
- We stand behind our B-2 parts with the highest guarantee – And our 100% money-back, no-questions-asked guarantee proves it.

\* Brunswick is a registered trademark of the Brunswick Bowling & Billiard Corporation and is in no way affiliated with QubicaAMF Worldwide, Inc.



## TABLE OF CONTENTS

### B-2 PARTS

Ball Lift Assembly .....	6
Ball Return Assembly .....	7-8
Cross Conveyor Assembly .....	8
Cushion Assembly .....	9-10
Deck Assembly .....	11-13
Elevator Assembly .....	13-17
Gear Box Assembly .....	17-22
Pit Conveyor Assembly .....	23-25
Rake Assembly .....	26-27
Turret Assembly .....	28-31
Electrical Components .....	31-32
Tools .....	33
Belts .....	34

### HARDWARE

Hex Head Cap Screws .....	38-44
Socket Head Cap Screws .....	45-46
Flat Head Socket Cap Screws .....	47-48
Button head Socket Cap Screws .....	49
Hex Nuts .....	49-51
Retaining Rings .....	52
Lock Washers .....	53
Flat Washers .....	54-55
Roll Pins .....	56
Spirol Pins .....	57
X-Washers .....	57
X-Washer Pins .....	58-59
Machine Keys .....	59
Steel Spacers & Bushings .....	60-61
Sleeve Oilite Bearings .....	62
Flanged Oilite Bearings .....	63
Ball Bearings .....	64-68
Tension Springs .....	69-70
Compression Springs .....	71





1

**B - 2 PARTS**

# BALL LIFT ASSEMBLY

## POWER LIFT TIRES



Rubber V-Tire/Alum Hub  
**Product Code** B12420360000 EA  
 Power Lift Tire  
**Product Code** B53520060000 EA  
 Urethane V Aluminum  
**Product Code** 250001051 EA  
 Urethane Foam Ball Lift Tire  
**Product Code** B90520060600 EA

## BALL LIFT MOTOR



**Product Code** 250001161 EA

## POWER LIFT DRIVE SHAFT



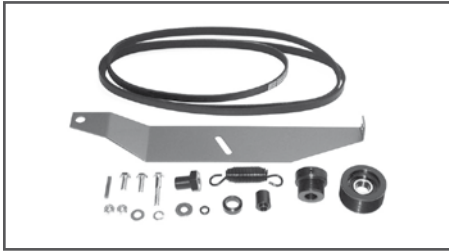
An exact replacement that will not wear or break.  
**Product Code** B53520066000 EA

## IDLER PULLEY MOUNTING STUD



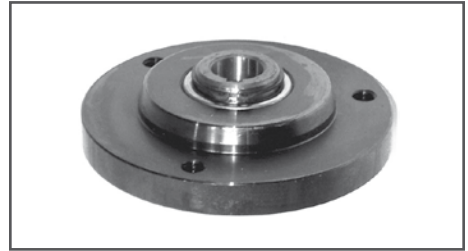
**Product Code** B53520071000 EA

## POLY V CONVERSION KIT



This kit includes everything needed to convert the old flat belt drive to the much more efficient Poly "V" belt.  
**Product Code** B53860431000 EA

## STANDARD POWER LIFT CLUTCH



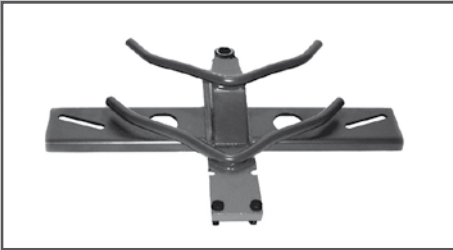
**Product Code** B53860555000 EA

## URETHANE BALL LIFT TRACK



Our long lasting urethane track replaces the older rubber and leather liners.  
**Product Code** B90520171000 EA

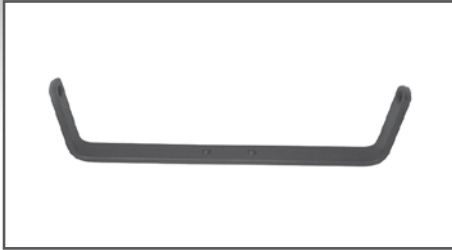
## Y TRACK ASSEMBLY



Heavy-duty steel eliminates breakage around the mounting holes for the Y switch plate.

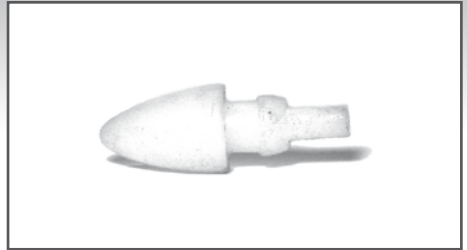
**Product Code** B1250210000 EA

## Y SWITCH STOP BAR



**Product Code** B12502131000 EA

## BUMPER



**Product Code** B12502154000 EA

## Y SWITCH SHAFT



**Product Code** B12502134000 EA

## ACCELERATOR PULLEY SHAFT



**Product Code** B12502353000 EA

## BALL JOINT ASSEMBLY



**Product Code** B10690001000 EA

## SPACER



**Product Code** B11387264002 EA

## HIGH CROWN ACC. PULLEY ASY & ACCELERATOR PULLEY ASSEMBLY



High Crown Acc. Pulley Asy  
**Product Code** B12502349600 EA  
Accelerator Pulley Assembly  
**Product Code** B12502349600 EA

## SHORT TRACK BRACE & LONG BRACE



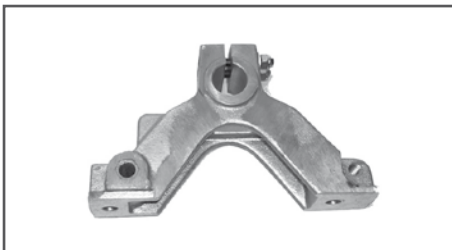
Short Track Brace  
**Product Code** B12502139000 EA  
Long Brace  
This welded steel tubing helps support the ball return track.  
**Product Code** B12502140000 EA

## Y SWITCH ASSEMBLY



**Product Code** B90502153000

## ACCELERATOR PULLEY SUPPORT



**Product Code** B12502303000 EA

## ACCELERATOR MOTOR PULLEY 1/2" BORE



Accelerator motor pulley 1/2" bore with 1 11/16" diameter  
**Product Code** B12502475000 EA  
Accelerator motor pulley 1/2" bore with 1 1/2" diameter  
**Product Code** B12502474000 EA

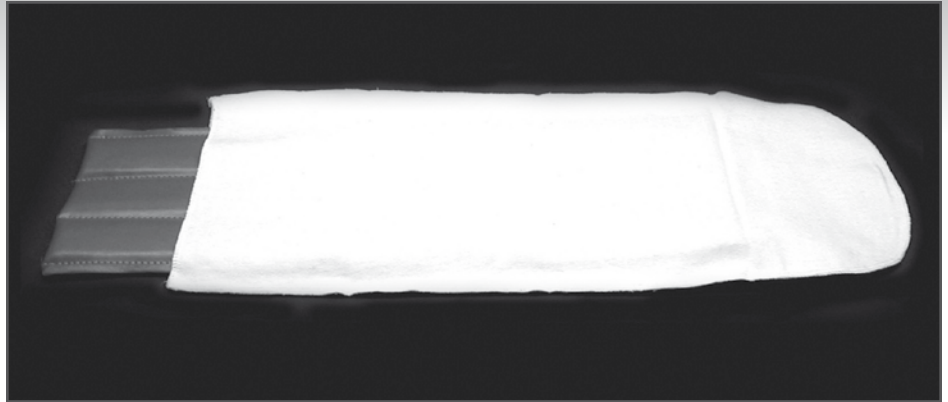
# BALL RETURN ASSEMBLY - CONTINUED

## MOTOR, ACCELERATOR 5/8" SHAFT



**Product Code**      **B12802059000**      **EA**

## BALL WIPE



Ball Wipe Complete  
**Product Code**      **B12252377000**  
 Ball Wipe Sleeve  
**Product Code**      **B12252377002**  
 Pad  
**Product Code**      **B12252377003**

# CROSS CONVEYOR ASSEMBLY

## CROSS CONVEYOR PULLEY



Machined steel idlers with replaceable ball bearings. Last longer than the traditional sheet metal idler pulleys.

**Product Code**      **B12450034000**      **EA**

## NYLON ROLLER



**Product Code**      **B12450064000**      **EA**

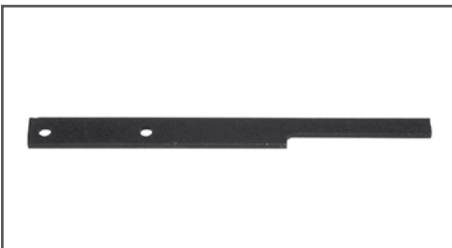
## SNUBBER



Polished and hard plated allows for a smooth transfer of pins.

**Product Code**      **B12450075000**      **EA**

## STRAP



Strap  
**Product Code**      **B12150057003**      **EA**  
 Nylon Strap  
**Product Code**      **B121556**      **EA**

## LATCH ASSEMBLY



The solid cast iron latch comes with hardened shoulder bolt and oilite bearings.

**Product Code**      **B12450032000**      **EA**

## SHOULDER BOLT (PKG OF 2)



**Product Code**      **B12252016000BG**      **BG**

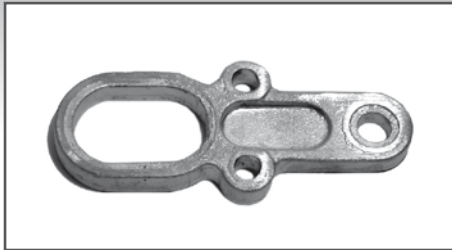


## CUSHION BRACKET



Product Code **B12252344000** EA

## FOLLOWER LINK



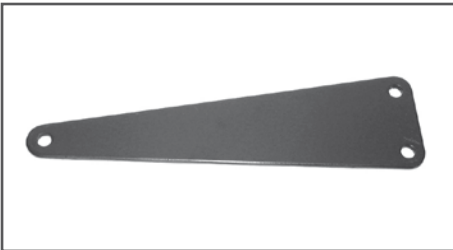
Product Code **B12252346000** EA

## CUSHION ARM BOLT (BAG OF 2)



Product Code **B12252352000BG** BG

## LINK PLATE



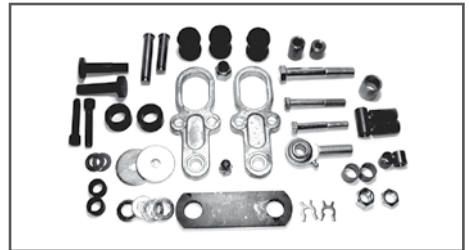
Product Code **B12252359000** EA

## CUSHION LIFT TUBE



Product Code **B12252364002**

## BIG KIT CUSHION ARM



Lots of "play" in your cushion? Is the ball not cycling the pinsetter? This kit includes all the replacement parts you need to rebuild one pit cushion arm.

Product Code **B12862580000** EA

## CUSHION MOUNT



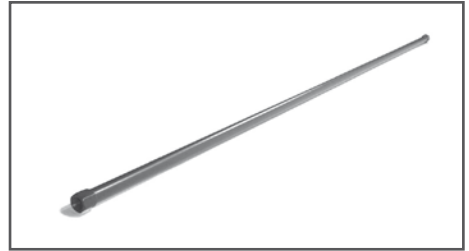
Product Code **B12862578000** EA

## CUSHION MOUNT



Product Code **B12862839000**

## TUBE



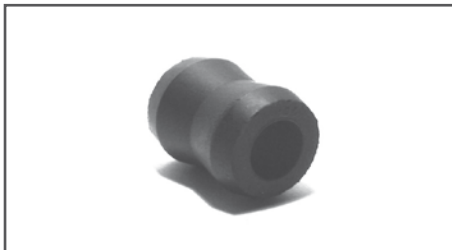
Product Code **B12252364003**

## ROD END (BAG OF 10)



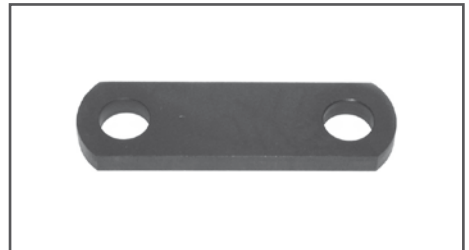
Product Code **B12250153000BG** BG

## RUBBER BUSHING (10 PER BAG)



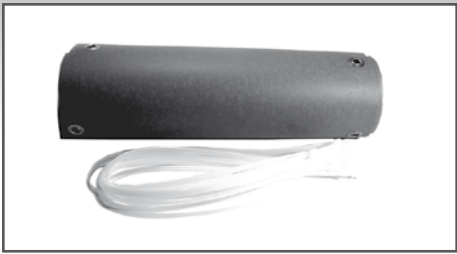
Product Code **B12250189000BG** BG

## LINK PLATE



Product Code **B12252069000** EA

## CUSHION COVER



**Product Code**    **B12252304000**    **EA**

## ROD BRACKET



LH rod bracket  
**Product Code**    **B12252269000**    **EA**  
 RH rod bracket  
**Product Code**    **B12252268000**    **EA**

## SHOCK



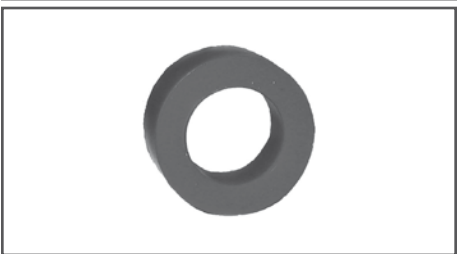
**Product Code**    **B12252173000**    **EA**

## RUBBER PIT CURTAIN



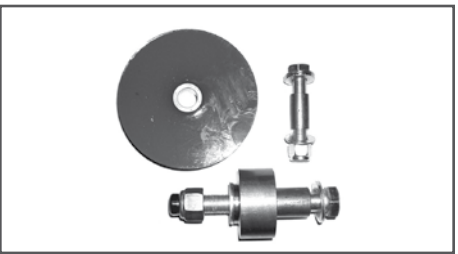
**Product Code**    **B12862167000**    **EA**

## ROLLER (BAG OF 10)



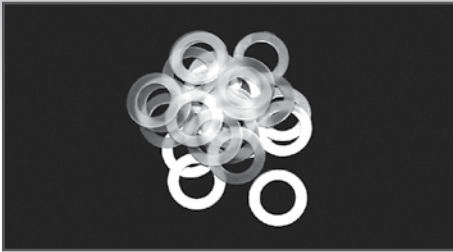
**Product Code**    **B12252351000BG**    **BG**

## PIT CUSHION CAM & ROLLER KIT



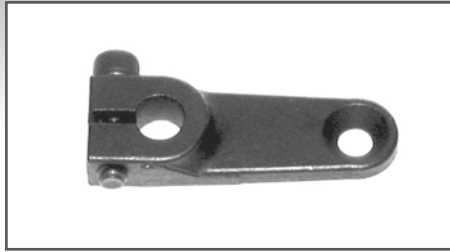
**Product Code**    **PPP-PC1K**    **EA**  
 No maintenance - replacement part  
**Product Code**    **PPP-RRA-NM**    **EA**  
 Steel Hub & Sleeve  
**Product Code**    **PPP-RRA**    **EA**

## NYLON WASHER (BAG OF 25)



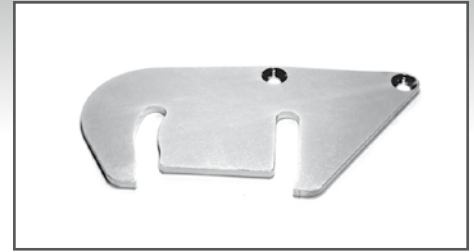
**Product Code**      **B12200031004BG**      **BG**

## DRAG LINK



**Product Code**      **B12200039000**      **EA**

## GENEVA PLATE



LH Geneva Plate  
**Product Code**      **B12200035000**      **EA**  
RH Geneva Plate  
**Product Code**      **B12200036000**      **EA**

## SPOTTING FINGER



Spotting finger LH  
**Product Code**      **B12200893000**      **EA**  
Spotting finger RH  
**Product Code**      **B12200892000**      **EA**

## DECK ROLLER



Made of neoprene rubber, the roller comes complete with the hub and bearing and is oil resistant.  
**Product Code**      **B90200114000**      **EA**

## DECK PAD



Urethane Foam Deck Pad (Box 10)  
**Product Code**      **B12860571000BX**      **BX**  
Deck Pad - Hot Shot Style (Box of 10)  
**Product Code**      **B12200874000**      **BX**

## STABILIZER ASSEMBLY



Original design comes complete with both rod ends.  
**Product Code**      **B12350122000**      **EA**  
Rod end RH  
**Product Code**      **B12350122003**      **EA**  
Rod end LH  
**Product Code**      **B12350122004**      **EA**  
Stabilized Rod Only  
**Product Code**      **B12350122002**      **EA**

## ARM ASSEMBLY



Scissor Arm Assembly  
**Product Code**      **B12200016091**      **EA**  
Arm Assembly Long With Pad  
**Product Code**      **B12200016000**      **EA**  
Scissor Arm Assembly Long Without Pad  
**Product Code**      **B12200017092**      **EA**  
Scissor Arm Assembly Short Without Pad  
**Product Code**      **B12200019092**      **EA**  
Scissor Arm Short With Pad  
**Product Code**      **B12200018000**      **EA**  
Gripper Pad  
Slip-on style, oil resistant rubber and ribbed for better pin placement.  
**Product Code**      **B12200120004**      **EA**

## DECK CHUTE



Deck Chute #7&10  
**Product Code**      **B12200808003**      **EA**  
Urethane Deck Chute #7&10  
**Product Code**      **B90200808003**      **EA**  
Deck Chute #5  
**Product Code**      **B12200837000**      **EA**  
Deck Chute Multi  
**Product Code**      **B12200900000**      **EA**  
Urethane Deck Chute Multi  
**Product Code**      **B90200900000**      **EA**  
Deck Chute #1  
**Product Code**      **B12200808002**      **EA**  
Urethane Deck Chute #1  
**Product Code**      **B90200808002**      **EA**

## DECK HOOK



Deck Hook & Hub Assembly  
**Product Code** B12350802000 EA  
 Deck Hook  
**Product Code** B12350803000 EA  
 Deck Hook Hub  
**Product Code** B12350804000 EA

## DECK POST PIN



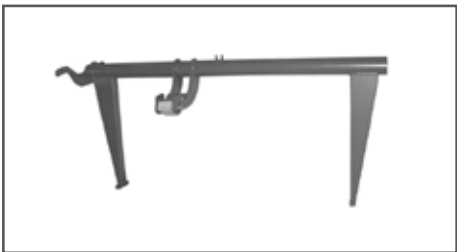
**Product Code** B12200129000 EA

## MOVING DECK WHEEL ASSEMBLY



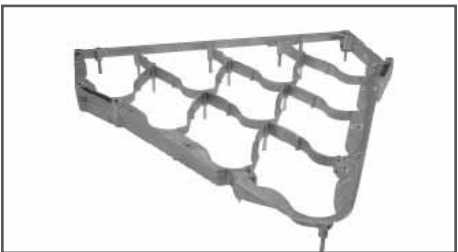
**Product Code** B12200126000 EA

## DECK LIFT SHAFT



**Product Code** B12862581000 EA

## USED MOVING DECK



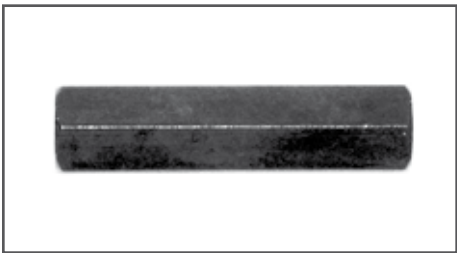
**Product Code** B12862117-R EA

## DECK JAM SWITCH TOOL



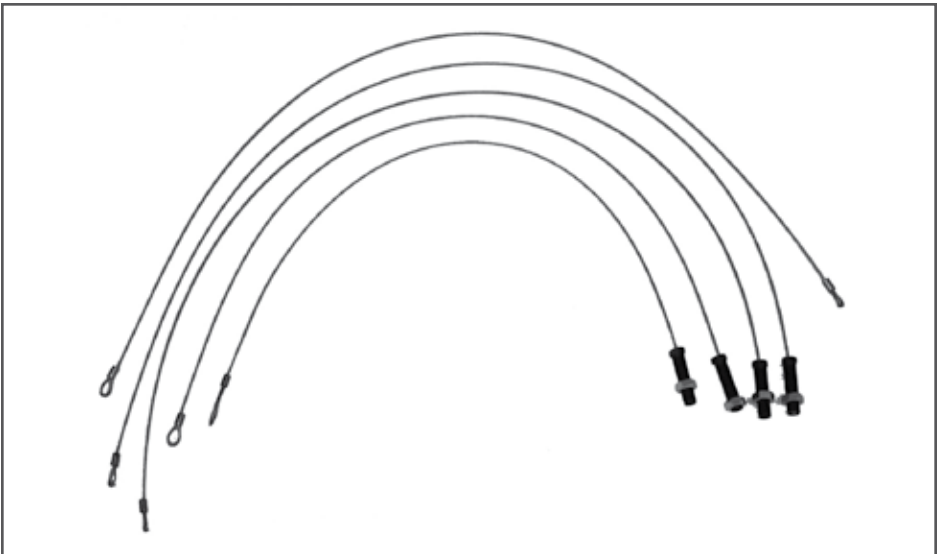
**Product Code** B12700207000 EA

## TURNBUCKLE



**Product Code** B12200069000 EA

## CABLES



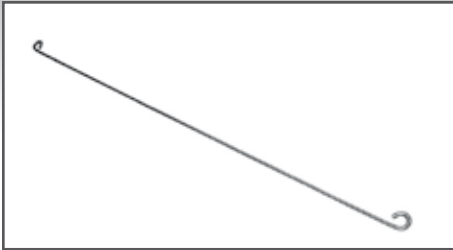
## CABLE SHAFT



**Product Code** B12350032000 EA

Moving deck cable assembly  
**Product Code** B12100280000 EA  
 Upper scissors cable  
**Product Code** B12200066002 EA  
 Upper deck cable  
**Product Code** B12200066003 EA  
 Lower deck cable  
**Product Code** B12200066004 EA  
 Lower Scissors Cable  
**Product Code** B12200067000 EA

## WIRE



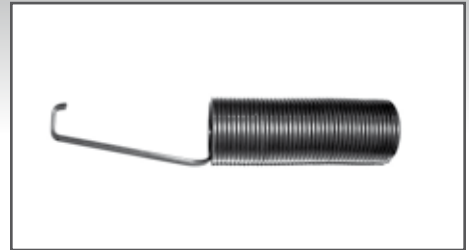
Product Code B12200094000 EA

## BUMPER (BAG OF 10)



Product Code B12200032000BG BG

## KEEPER SPRING



Product Code B12200125000 EA

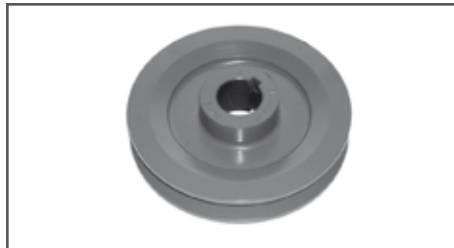
# ELEVATOR ASSEMBLY

## SET SCREW 3/18-16 X 2 3/4



Product Code B11102262001 EA

## BALL WHEEL DRIVE SHEAVE



Product Code B12400035003 EA

## SMALL REAR CROSS SHEAVE



Product Code B12400035006 EA

## CROSS CONVEYOR DRIVE SHEAVE



Product Code B12400035008 EA

## LONG TURRET DRIVE SHEAVE



Product Code B12400035009 EA

## WASHER



Product Code B12400139003 EA

## UNIVERSAL JACK SHAFT



A precision machined shaft that will fit either the Right or Left side of the elevator.

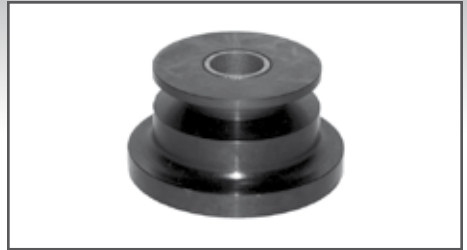
**Product Code** B12400810000 EA

## ARM & BEARING ASSEMBLY



**Product Code** B12400254000 EA

## PIN WHEEL DRIVE PULLEY 'A'



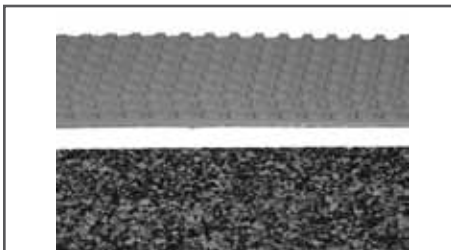
**Product Code** B12400126000 EA

## PIN WHEEL DRIVE PULLEY A-2



**Product Code** B12402126000 EA

## KICKER



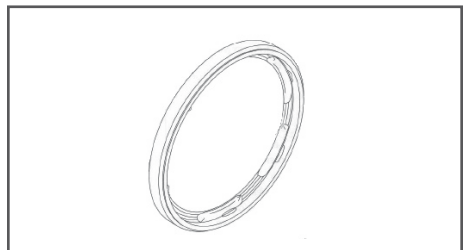
Kicker Strip 10' Roll

**Product Code** B12860330000 RL

Cork Kicker Strip 10' Roll

**Product Code** B12860330091 RL

## PINWHEEL-USED



**Product Code** B12860642000-R EA

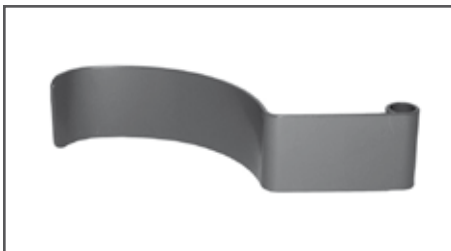
Limited Availability.

## MAGNETIC CLUTCH ASSEMBLY



**Product Code** B12862163000 EA

## PIN WHEEL BRAKE



**Product Code** B12402422000 EA

## IDLER ARM STUD



**Product Code** B12400027000 EA

## COLLAR IDLER STUD



**Product Code** B12400300000 EA

## LIFT ROD SUPPORT



**Product Code** B12862180000 EA

## BALL LIFT STUD



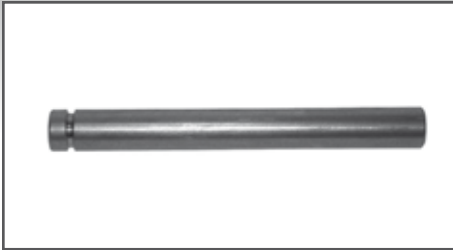
Ball lift stud - A

**Product Code** B12400051000 EA

Ball lift stud - A2

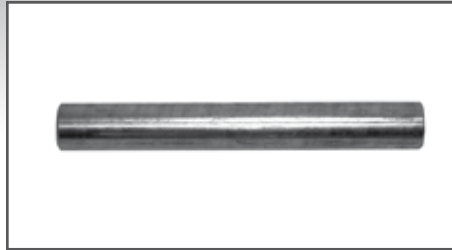
**Product Code** B12402051000 EA

## BALL LIFT PIN



Product Code **B12400053000** EA

## LIFT ROD PIN NEW STYLE



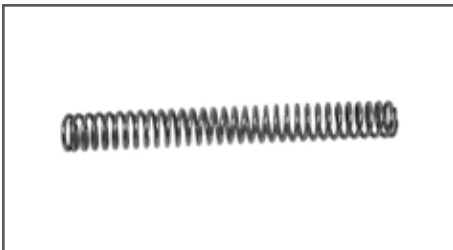
Product Code **B12400848000** EA

## SPRING ROD



Product Code **B12400193000** EA

## COMPRESSION SPRING



Product Code **B12402121000** EA

## SPRING ROD BUSHING DELRIN



Product Code **B90400803000** EA

## SPRING ROD WEAR BUSHING



Product Code **B12400803000** EA

## LIFT ROD COVER GUM RUBBER 50'



This 50' roll of wear-resistant rubber, resists twisting, does not mark balls, and does not absorb oil.

Product Code **B12400048091** EA

Heavy Duty Lift Rod Cover 50'

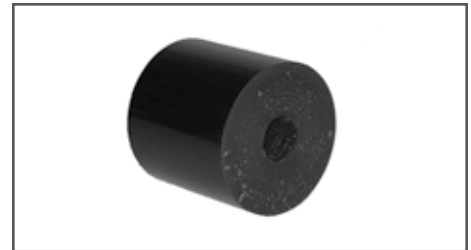
Product Code **B9040004800** EA

## LOWER LIFT ROD CAP



Product Code **B12402432000** EA

## SPRING ROD BUMPER



Product Code **B90400123000** EA

## UPPER CAP LARGE



Upper cap large  
Product Code **B12402043000** EA

## UPPER CAP SMALL



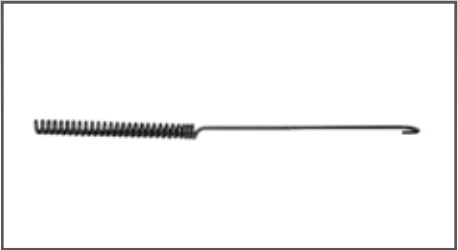
Upper cap small  
Product Code **B12402042000** EA

## OUTER SPRING



Product Code **B12400806002** EA

## INNER SPRING HOOK



Product Code **B12400806003** EA

## GUIDE ROLLER SHAFT



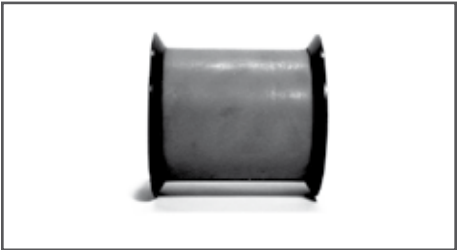
Guide roller shaft  
Product Code **B12400256000** EA

## HEAVY DUTY GUIDE ROLLER



Heavy Duty Guide Roller  
Product Code **B12862823000** EA  
Heavy Duty Hub and Tire  
Product Code **B128623A** EA  
Heavy Duty Nylon Flange  
Product Code **B128623B** EA

## LOWER PIN WHEEL ROLLER ASSEMBLY



Lower pin wheel roller assembly  
Product Code **B12400263000** EA  
Hub & Tire Lower Pin Wheel  
Product Code **B12400261000** EA  
Lower Pin Wheel Flange  
Product Code **B12400262000** EA

## GUIDE ROLLER ASSEMBLY SMOOTH



Guide Roller Assembly Smooth  
Product Code **B12400240000** EA  
Hub & Tire (Lower Ball Wheel Smooth)  
Product Code **B90400258000** EA  
Lower Ball Wheel Flange  
Product Code **B12400257000** EA

## GUIDE ROLLER ASSEMBLY GROOVED



Guide Roller Assembly Grooved  
Product Code **B12400268000** EA  
Hub & Tire - Grooved  
Product Code **B90400260000** EA  
Lower Ball Wheel Flange  
Product Code **B12400257000** EA

## BELT IDLERS



Machined steel idlers with replaceable ball bearing. Last longer than the traditional sheet metal idler pulleys.  
Belt Idler - 5 elevator flat  
Product Code **B12400297000** EA  
Belt Idler Elevator & Turret V  
Product Code **B12400221000** EA  
Belt Idler - 3 Flat Long Turret  
Product Code **B12400219000** EA  
Belt Idler Cross Conveyor Round  
Product Code **B12400209000** EA

## UPPER BW GUIDE ROLLER



Urethane Upper BW Guide Roller Assy  
Product Code **B90400272000** EA  
Upper Hub & Tire  
Product Code **B90400271000** EA  
Nylon Flange Upper Ball Wheel  
Product Code **B12400269000** EA



## UPPER PW GUIDE ROLLER



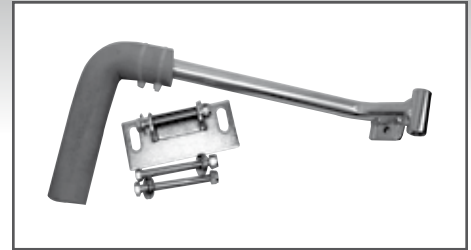
P.W.G.R. Assy  
**Product Code B1240026600 EA**  
 Hub & Tire Upper Pinwheel  
**Product Code B9040026400 EA**  
 Flange  
**Product Code B1240026500 EA**

## LEAF SPRING



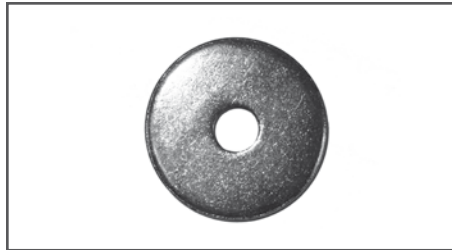
Long Leaf Spring  
**Product Code B12400055003 EA**  
 Pin Wiper Leaf Spring  
**Product Code B12400071000 EA**

## SPINNING BALL ELIMINATOR



**Product Code B12860583000 EA**

## WASHER



**Product Code B12400139003**

## UNIVERSAL URETHANE WHEEL GUARD



**Product Code B90400840000 EA**

# GEARBOX ASSEMBLY

## SOLENOID 208V/230V & PLUNGER



Solenoid 208v/230v  
**Product Code B10688003000 EA**  
 Plunger  
**Product Code B10688003003 EA**

## STARTER BELL CRANK RING PIN (BAG OF 5)



**Product Code B10229451000BG BG**

## LOCKNUT



**Product Code B11160005001 EA**

## BALL RING & ROLLER BEARING



Product Code **B1145010000** EA

## INNER RING



Product Code **B1145020000** EA

## OUT OF RANGE RESET LINK



Product Code **B12100040004** EA

## WORM WHEEL



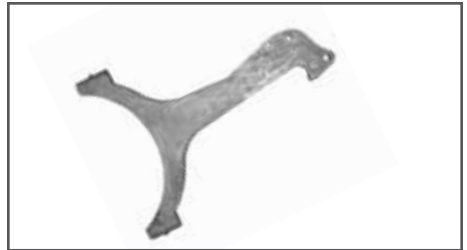
Product Code **B12100174002** EA

## LEVER ASSEMBLY



Product Code **B12100465000** EA

## DECK LIFT HOOK



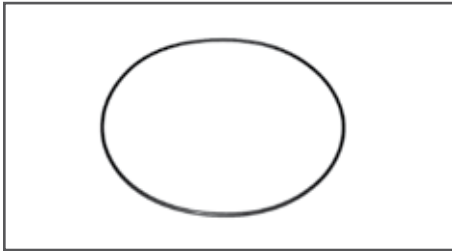
Product Code **B12100832000** EA

## O RING (BAG OF 10)



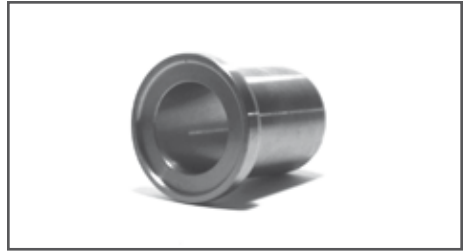
Product Code **B11625501000BG** BG

## O RING (BAG OF 2)



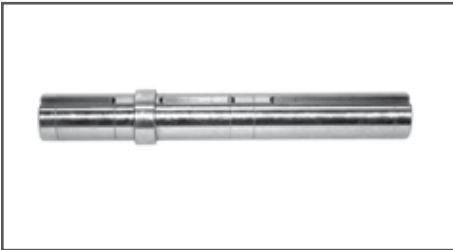
Product Code **B11625530000BG** BG

## WORM SHAFT SPACER



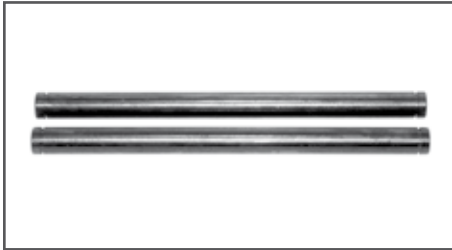
Product Code **B12100066000** EA

## 1 TO 1 SHAFT



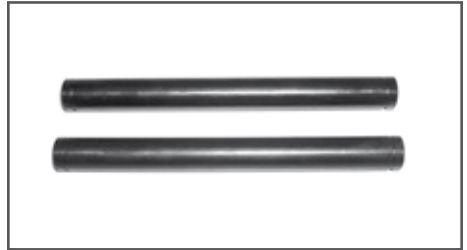
Product Code **B12100130000** EA

## CLUTCH YOKE PIN



Product Code **B12100168003BG** BG

## CLUTCH LEVER PIN



Product Code **B12100168002BG** BG

## DETECTOR DRIVE GEAR



**Product Code** B12100068000 EA

## BEARING STUD (BAG OF 2)



Deck Lowering Hook Cam Follower Bearing Stud  
**Product Code** B12100069000BG BG

## CAM LEVER SHAFT



**Product Code** B12100072000 EA

## CAM FOLLOWER SHAFT WITH COLLAR



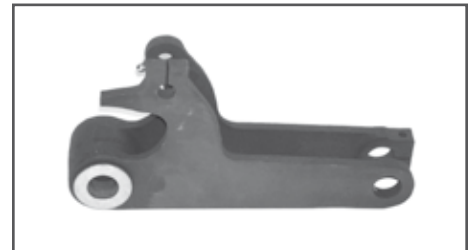
Cam Follower Shaft With Collar  
**Product Code** B12100104000 EA  
 Locking Shaft Collar  
**Product Code** B121105BG BG  
 Grade & Stud (Bag of 5)  
**Product Code** B121107BG BG

## CYCLE CAM



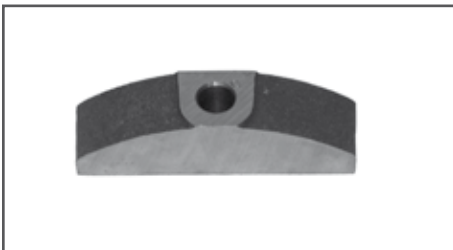
**Product Code** B12100122000 EA

## CAM FOLLOWER



**Product Code** B12100313000 EA

## CLUTCH SHOE



Clutch Shoe Standard Size  
**Product Code** B12100146000 EA  
 Clutch Shoe (.030 Large)  
**Product Code** B12100146030 EA

## HEAVY DUTY WORM NUT



**Product Code** B11131516000 EA

## YOKE AND BEARING



**Product Code** B12100370000 EA

## SPACER



**Product Code** B12100185003 EA

## SPACER (BAG OF 2)



**Product Code** B12100185014BG BG

## PLATE



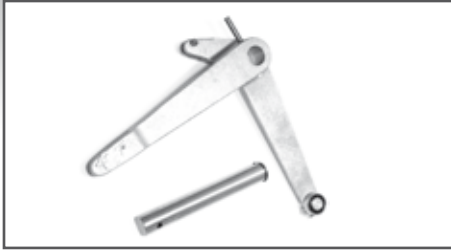
**Product Code** B12100207000 EA

## WASHER



Product Code **B12100223000** EA

## DECK HOOK CAM LEVER ASSEMBLY



Deck Hook Cam Lever Assembly  
 Product Code **B12100242000** EA  
 Deck Hook Cam Lever  
 Product Code **B12100178000** EA

## HEX HEAD BOLT (BAG OF 5)



Product Code **B12100257000BG** BG

## LINK



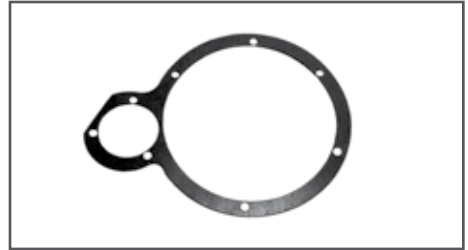
Product Code **B12100025000** EA

## OUT OF RANGE LINK ASSEMBLY



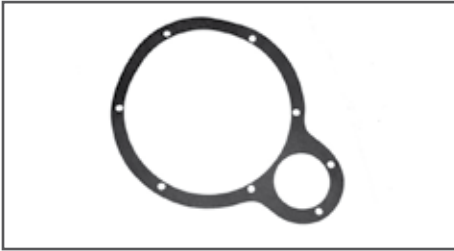
Product Code **B12100337000** EA

## LH G BX GASKET COVER (BAG OF 5)



Product Code **B12100339000BG** BG

## GASKET



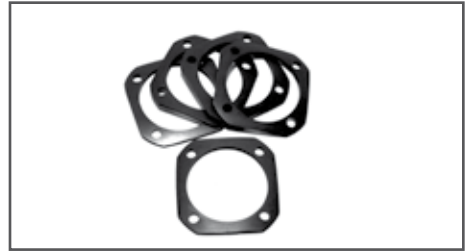
Product Code **B12100340000** EA

## GASKET OIL SEAL (BAG OF 25)



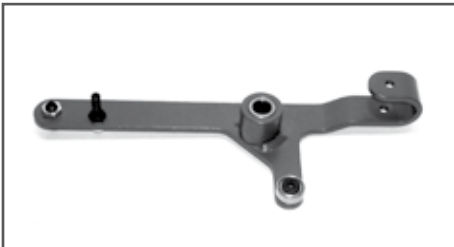
Product Code **B12100344002BG** BG

## GASKET (BAG OF 5)



Product Code **B12100391000BG** BG

## HOOK SELECTOR



Product Code **B12100410000** EA  
 Bearing Kit  
 Product Code **B121041B**

## BEARING RETAINER



Product Code **B12100477000** EA

## CLUTCH LEVER ASSEMBLY



Product Code **B12100484000** EA

## MOVING DECK & SCISSOR CAM



Moving Deck & Scissor Cam for Scotch Yoke  
**Product Code B12102794000 EA**  
 Moving Deck & Scissor Cam for Lowering Links  
**Product Code B12100828002 EA**

## 2-1 MAIN SHAFT



**Product Code B12100829000 EA**

## DECK LIFT HOOK CAM



**Product Code B12100831000 EA**

## CLUTCH RESET LEVER



**Product Code B12102176000 EA**

## TRIGGERING LINK (BAG OF 5)



**Product Code B12102363000BG BG**

## STUD



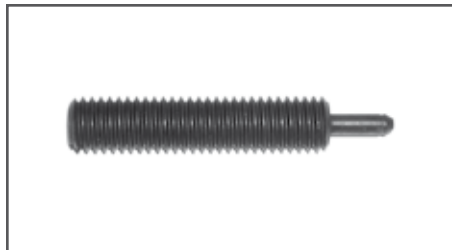
**Product Code B12102754000 EA**

## BLOCK



**Product Code B12102791000 EA**

## STUD



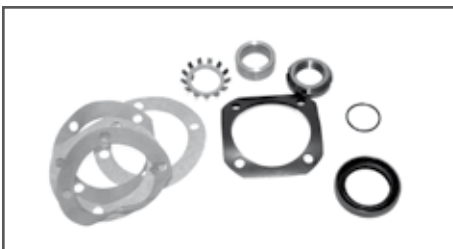
**Product Code B12102792000 EA**

## PINSETTER MOTOR PULLEY



Pinsetter Motor Pulley 'A'  
**Product Code B12400081000 EA**  
 Pinsetter Motor Pulley Jet Back  
**Product Code B12502410000 EA**  
 Pinsetter Motor Pulley A-2  
**Product Code B12402081000 EA**

## OIL SEAL KIT



**Product Code B12860603000 EA**

## CLUTCH DRIVE DISC



Clutch Drive Disc  
**Product Code B12860613000 EA**  
 Clutch Drive Disc facing Kit  
**Product Code B12862864005 EA**

## CLUTCH DISC



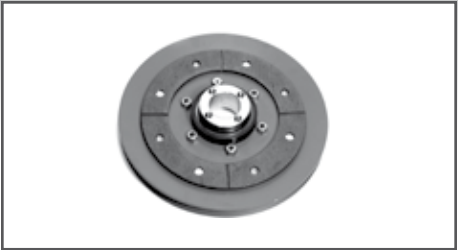
**Product Code B12860626000 EA**

## CLUTCH RELEASE LINK



**Product Code**     **B12862867000**     **EA**

## CLUTCH PULLEY



Clutch Pulley & Bearing Assembly  
**Product Code**     **B12860717000**     **EA**  
 Clutch Pulley & Facing Only  
**Product Code**     **B12860630000**     **EA**  
 Clutch Pulley Bearing Only  
**Product Code**     **B12860716000**     **EA**  
 Clutch Pulley Facing Kit  
**Product Code**     **B12862864003**     **EA**

## COVER & PIN



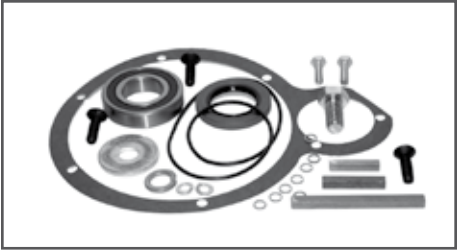
Cover & Pin Assembly  
 Comes complete with bearing, oil seal, O ring, paper gaskets, and copper mounting gaskets.  
**Product Code**     **B12860628002**     **EA**  
 Cover & Pin Only  
**Product Code**     **B12860628000**     **EA**

## WORM SHAFT



Worm Shaft Assembly  
 This 60:1, precision ground, heat treated shaft comes complete with all bearings, seals and gaskets.  
**Product Code**     **B12860172000**     **EA**  
 Worm Shaft Only  
**Product Code**     **B12860171000**     **EA**

## 1 TO 1 KIT



**Product Code**     **B12862859000**     **EA**

## YOKE REPAIR KIT



**Product Code**     **B12860672000**     **EA**

## AUTO OUT OF RANGE KIT



**Product Code**     **B121060**     **EA**

**MAINTENANCE TIP:**  
 The Gearbox Clutch Assembly should be serviced yearly. By removing the clutch assembly, you will be able to inspect the worm shaft, clutch shoes/facings, drive disc, and clutch disc for undue wear. Cleaning, lubricating, and reassembly of the clutch should take about an hour. This is also a good time to be sure that the Deck Jam Micro Switch is working properly.

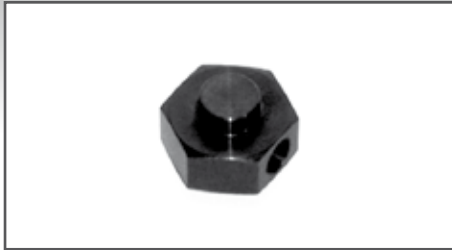


## SPLINE NUT 3/8-24



Product Code **B11155401002** EA

## PIVOT



Product Code **B12300178000** EA

## STEP WASHER



Product Code **B12300189000** EA

## BEARING & HOUSING ASSEMBLY



Bearing & Housing Assembly  
 Product Code **B12300160000** EA  
 Bearing  
 Product Code **B12300160003** EA

## ORIGINAL BEARING & HOUSING



Product Code **B12300164000** EA

## VIBRATOR SHAFT



Our hardened steel, one-piece shaft is machined for a tight bearing fit that will extend the life of the shaft.  
 Product Code **B12300141000** EA

## SHAFT



Product Code **B12300149000** EA

## CLAMP & PIN ASSEMBLY



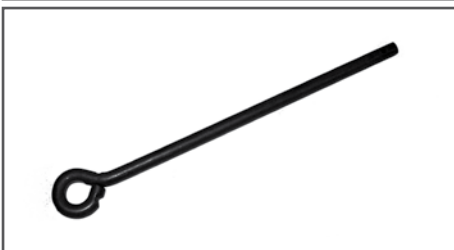
Clamp & Pin Assembly RH  
 Product Code **B12300168000** EA  
 Clamp & Pin Assembly LH  
 Product Code **B12300169000** EA

## BOTTOM PIT FRAME ASSEMBLY



Product Code **B12300131000** EA

## SPRING GUIDE



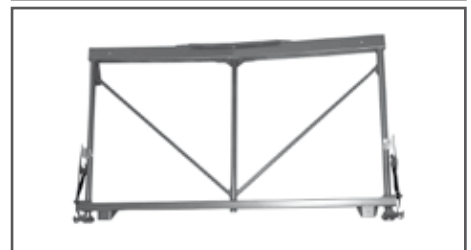
Product Code **B12300170000** EA

## COMPRESSION SPRING



Product Code **B12300172000** EA

## PIT FRAME ASSEMBLY



Product Code **B12860659000** EA

# PIT CONVEYOR ASSEMBLY - CONTINUED

## REAR PIER



Rear Pier

**Product Code** B12300077000 EA

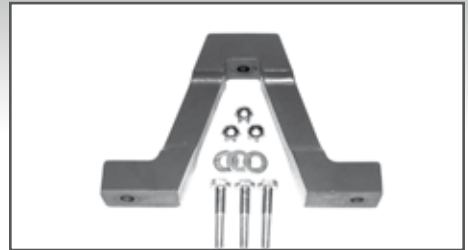
## RUBBER PIT MOUNT



Black Rubber Mount

**Product Code** B9067500000 EA

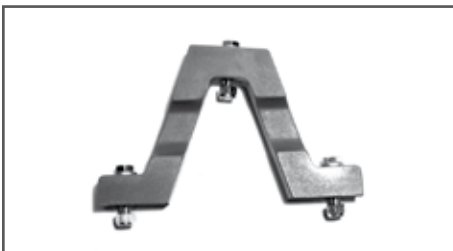
## FRONT PIT MOUNT



This one-piece urethane mount is requested by most mechanics.

**Product Code** B90300076000 EA

## REAR PIT MOUNT



**Product Code** B90300077000 EA

## PIT RUG



Pit Rug

**Product Code** B12300103000 EA

Economy Pit Rug

**Product Code** B12300103E EA

## PIT CARPET COVER



**Product Code** B12862919000 EA

Velcro Carpet Cover

**Product Code** B12300103-V

## DEFLECTOR



LH Deflector

**Product Code** B12300207000 ESA

RH Deflector

**Product Code** B12300208000 EA

## PIT FRAME CONVERSION KIT



**Product Code** B12860624000 EA

## LEVER & BRACKET RH & LH



Lever & Bracket RH

**Product Code** B12300192000 EA

Lever & Bracket LH

**Product Code** B12300193000 EA

## BELT IDLER PIT & ASSEMBLY



Machined steel idlers with replaceable ball bearings. Last longer than the traditional sheet metal idler pulleys.

Belt Idler Pit

**Product Code** B12300075000 EA

## STEEL JOGGER ARM



Steel Jogger Arm Assembly

**Product Code** B12300194000 EA

Steel Jogger Arm

**Product Code** B12300163000 EA

Made of steel, our jogger arm is machined for tight tolerances. It can also be purchased as an assembled unit.

## PIT SHAFT DRIVE PULLEY



**Product Code** B12300244000 EA



## PULLEY ASSEMBLY



Pulley Assembly Small  
**Product Code**    **B12300071000**    **EA**  
 Pulley Assembly Large  
**Product Code**    **B12300073000**    **EA**

## PIT BOARD



Fiberglass Pit Board  
**Product Code**    **B12860620002**    **EA**  
 Fiberglass Pit Board Assembly  
**Product Code**    **B12860620003**    **EA**  
 Wood Pit Board Assembly  
**Product Code**    **B12860620004**    **EA**  
 Wood Pit Board  
**Product Code**    **B12860620005**    **EA**

### MAINTENANCE TIP:

Help extend the life of your Heavy Duty Carpet Covers (B12862919000), by keeping an extra rotation set on hand. Be sure to check the pit height (1/8" – 3/16") to the front edge of the ball wheel for proper ball transfer.

# RAKE ASSEMBLY

## A-2 RAKE CRANK PIVOT ASSEMBLY



Product Code **B12250273000** EA

## A-2 RAKE CRANK PIVOT ASSEMBLY



Product Code **B12250275000** EA

## ACTUATING LINK



Product Code **B12250040000** EA

## RAKE CRANK ROD



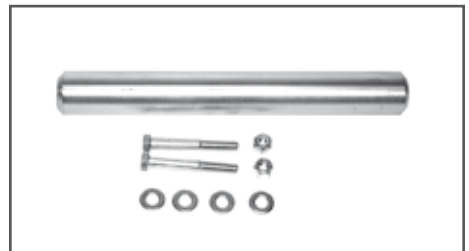
Rake Crank Rod 40 7/8" ST  
**Product Code B12250278002** EA  
 Rake Crank Rod 40" TP  
**Product Code B12250022002** EA

## COLLAPISBLE CRANK ROD TP & ST



Collapsible Crank Rod TP  
**Product Code B12250289000** EA  
 Collapsible Crank Rod ST  
**Product Code B12252309000** EA

## RAKE SHAFT KIT



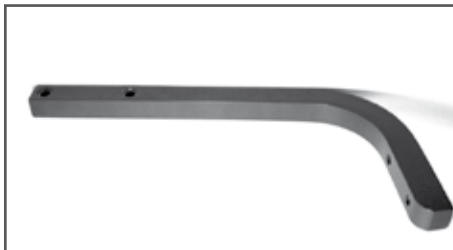
Rake Shaft Repair Kit  
**Product Code B12860607000** EA  
 Japanese Rake Shaft Kit  
**Product Code B128606650000** EA

## ROD 59 1/2"



Product Code **B12252024004** EA

## SWEEP ARM



Product Code **B12252037000** EA

## A-2 RAKE LIFT SHAFT



Product Code **B12252048000** EA

## SHOCK



Product Code **B12252338000** EA

## PIVOT



Product Code **B12252355091** EA

## TRIP ARM ASSEMBLY



Made from cast aluminum, this dependable trip arm comes with the oilite bearings installed.  
**Product Code B12252354000** EA

## TRIP LEVER ROD



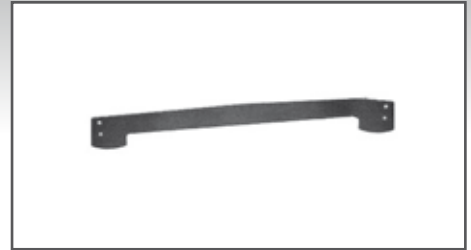
Product Code **B12252356000** EA

## RAKE SHAFT ASSEMBLY



Product Code **B12862186000** EA

## RAKE BOARD



Product Code **B12252373000** EA

## ROD END KIT RH & LH



Rod end Kit RH  
**Product Code B12860576000 EA**  
 Rod end Kit LH  
**Product Code B12860577000 EA**

## SPARE ARM ASSEMBLY (RAKE)



This is a single rake arm that can be used on either side of our Rake Shaft Assembly (B12862186000). A handy item if one side of the RSA is broken or bent.  
**Product Code B12862186006 EA**

# TURRET ASSEMBLY

## BOLT



Product Code **B11106525000** EA

## SPRNG GUIDE



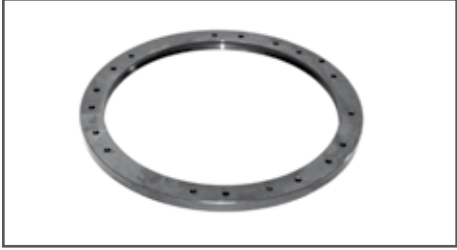
Product Code **B12150004000** EA

## TORSION LATCH



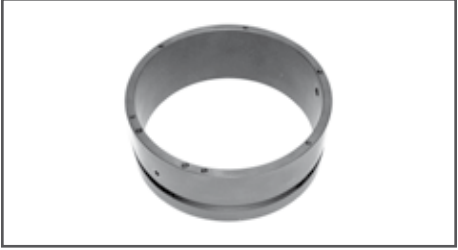
Product Code **B12150011000** EA

## SPIDER RING



Product Code **B12150039000** EA

## TURRET RING



Product Code **B12150040000** EA

## BELL CRANK



Replace your worn indexing bellcrank with our exact replacement.

Product Code **B12150051000** EA

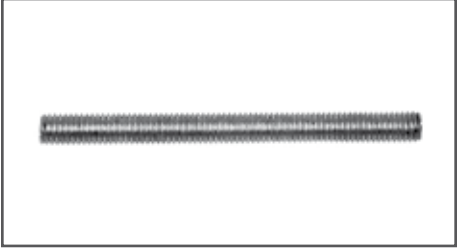
## ROLLER STUD



Roller Stud  
Product Code **B12150056003** EA

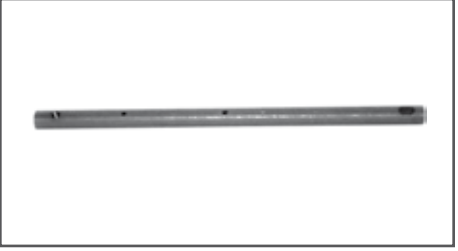
Roller Stud  
Product Code **B12150056002** EA

## STUD



Product Code **B121500620000** EA

## TRIP LEVER SHAFT



Product Code **B12150069000** EA

## INTERLOCK PROBE



Product Code **B12150086000** EA

## CHUTE ASSEMBLY



Product Code **B12150108000** EA

## CENTER CHUTE REPAIR PLATE



Product Code **B12150109000** EA

## SEAL



Product Code **B12150115000** EA

## SPRING WHEEL



Spring Wheel  
Product Code **B12150130005** EA  
Spring Wheel  
Product Code **B12150130006** EA

## TURRET DELAY GEAR



Product Code **B12150138000** EA

## INTERLOCK SHAFT



Product Code **B12150143003** EA

## WASHER



Product Code **B12150157003** EA

## BLOCKING FINGER



LH Blocking Finger  
Product Code **B12150176000** EA  
RH Blocking Finger  
Product Code **B12150200000** EA

## SHAFT



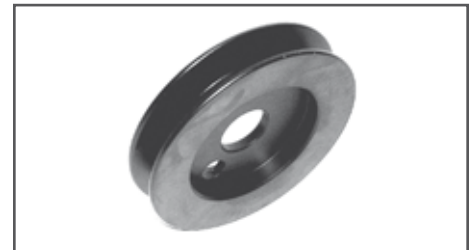
Product Code **B12150216000** EA

## TURRET CLUTCH DRIVE PULLEY OFFSET



Used with cast indexing cams.  
Product Code **B12150219000** EA

## TURRET CLUTCH DRIVE PULLEY



This case harden pulley is designed to replace the two-piece metal discs found on later machines.  
Product Code **B12150306000** EA

## TURRET CLUTCH TOP PULLEY ASSEMBLY



Product Code **B12150220000** EA

## ROLLER & BEARING ASSEMBLY



Product Code **B12150226000** EA

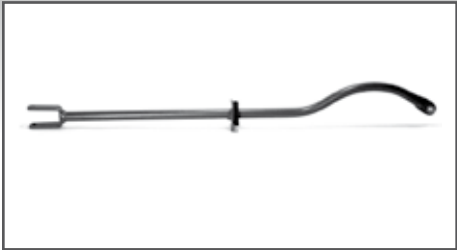
## LINKAGE ASSEMBLY



Product Code **B12150227000** EA

# TURRET ASSEMBLY - CONTINUED

## LONG TURRET LINK



Product Code **B12150234000** EA

## LATCH



Product Code **B12150235000** EA

## TIME DELAY GEAR SHAFT



Product Code **B12150254000** EA

## TURRET SLIDE PLATE



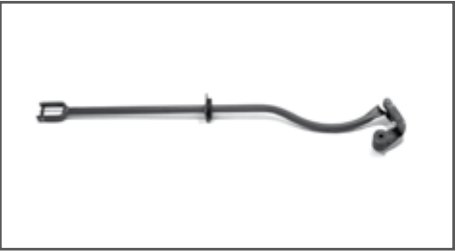
Product Code **B12150258000** EA

## LEVER



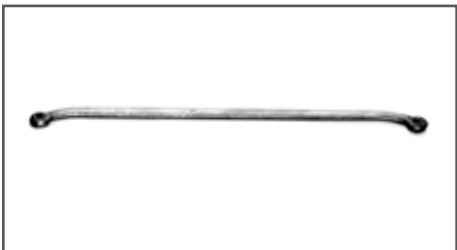
Product Code **B12150279000** EA

## LONG LINK & LEVER ASSEMBLY



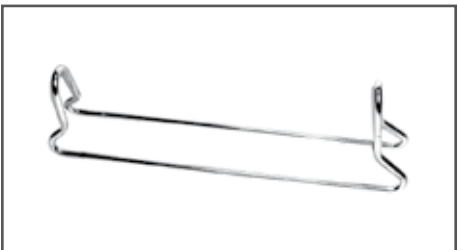
Product Code **B12150287000** EA

## SHORT LINK



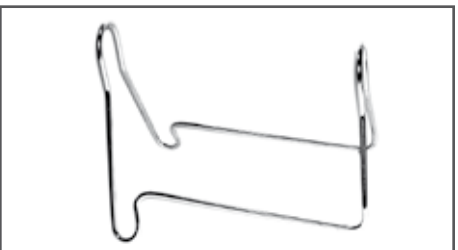
Product Code **B12150289000** EA

## INNER GUIDE



Inner Guide 2, 3, 4, 6, 8, 9  
 Product Code **B12150294000** EA  
 Inner Guide 1, 7, 10  
 Product Code **B12150295000** EA

## GUIDE OUTER



Guide Outer 2, 3, 4, 6, 8, 9  
 Product Code **B12150297000** EA  
 Guide Outer 1, 7, 10  
 Product Code **B12150296000** EA

## INDEXING ROLLER



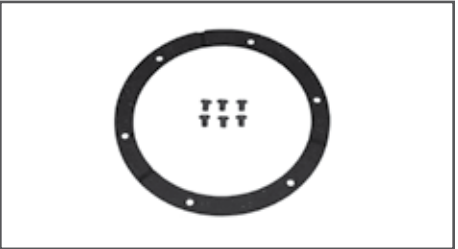
Product Code **B12150303000** EA

## FRICTION DISC ASSEMBLY NYLON FACING



Friction Disc Assembly Nylon Facing  
 Product Code **B12860804000** EA  
 Clutch Facing - 3 piece  
 White nylon facing for improved performance  
 Product Code **B12860805000** EA

## FACING KIT "ORIGINAL" STYLE



Product Code **B12862864002** EA

## TURRET WIRE PAD & CUSHION



Product Code    **B90150182000**    EA

## PIN



Product Code    **B12150253000**    EA

## SPRING



Product Code    **B12150213000**    EA

## MAINTENANCE TIP:

Regular maintenance of the Turret Clutch and related parts will help keep your pinsetter running smoothly. Always check for excessive play in the indexing linkage. Very little to no play at all, along with proper adjustments, results in trouble free indexing. Yearly inspection, cleaning, and lubrication of the clutch itself will help eliminate multiple indexing and noise. It is also recommended to check that the Turret Jam Switch is working properly.



## ELECTRICAL COMPONENTS

### TOGGLE SWITCH



Product Code    **B11615501000**    EA

### RECTIFIER



Product Code    **B12750079000**    EA

### CIRCUIT BREAKER



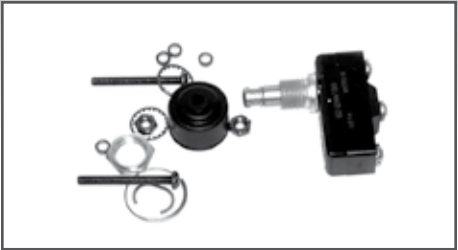
Product Code    **B12750746002**    EA

## PINSETTER MOTOR



OEM style over 59 lbs. Ideal for proper belt tension.  
**Product Code B12752056000 EA**  
 Used Pinsetter Motor  
**Product Code B12752056-R EA**

## MICRO SWITCH KIT



Micro Switch Kit  
**Product Code B12860667000 EA**  
 Micro Switch Kit CC  
**Product Code B12860668000 EA**

## 3 PDT 24 V RELAY



**Product Code 755503045**  
 Relay Base  
**Product Code 757003039**

## FUSTATS 3-2/10



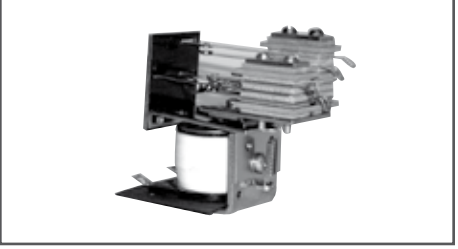
**Product Code B12750180000 EA**

## TRANSFORMER



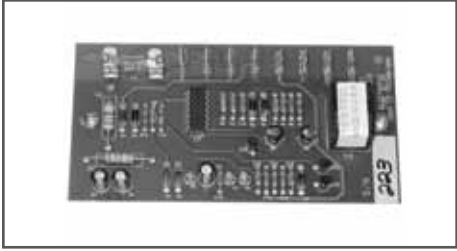
**Product Code B12862164000 EA**

## RELAY



**Product Code B12862827000 EA**

## TIME DELAY MODULE



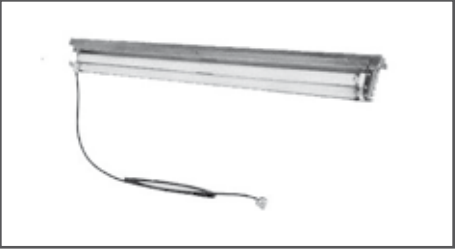
**Product Code B12862890000 EA**

## 48" BLACK LIGHT (6 PK)



**Product Code B12862933000BX EA**

## 120 V DUAL PINDECK LIGHT 48"



**Product Code 090008035 EA**  
 Transformer  
**Product Code 090008095 EA**

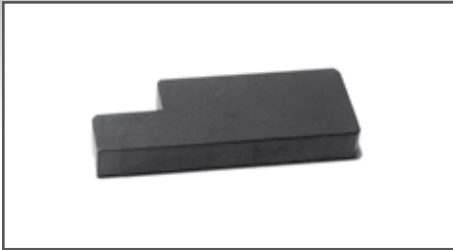
## SOLENOID BOX ASSEMBLY WITH RELAY



Use with QubicaAMF Scoring & FBox  
**Product Code SB643024 EA**



**4-1 WORM WHEEL ADJUST TOOL**



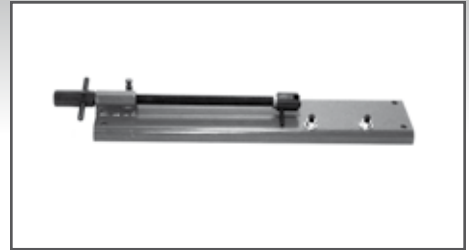
Product Code **B12100512000** EA

**ROD COVER AIR FITTING**



Product Code **B12700268000** EA

**DECK JAM SPRING COMPRESSOR**



Product Code **B12700110000** EA

**PIN FORK**



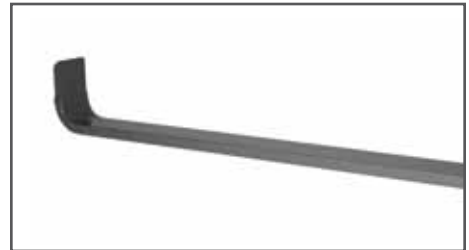
Product Code **B158100** EA

**GREASE NEEDLES (BOX OF 12)**



Product Code **B12700126000BX** BX

**DECK JAM SWITCH CHECKER**



Product Code **B12700207000** BX

**SURE STOP TURRET JIG**



Product Code **SSTJ** EA

**SCISSOR SPRING INSTALLER TOOL QTY. 1**



Product Code **B12700271000**

# BELTS

## 1 - MOTOR TO GEAR BOX

B10635304000 Standard A2  
 B10635325000 A2 1.5" shorter  
 B10635326000 A2 2.5" longer (50 cycles)  
 B12400034002 Standard A

## 2 - MOTOR TO ELEVATOR

B10635303000 Standard A2  
 B10635306000 A2, 50 Cycles  
 B10635315000 A2 w/ tension conversion kit  
 B10635330000 A2  
 B12400034003 A and Jet Back  
 B10635329000 Standard Jet Back

## 3 - V BELT CROSS DRIVE (JACK SHAFT)

B12400034004

## 4 - V BELT BALL WHEEL

B12400227000  
 B12400227000S Spliced

## 5 - V BELT PIN WHEEL

B12400034005

## 6 - CROSS CONVEYOR DRIVE

B10635309000 V Belt  
 B12400034007 Round

## 7 - LONG TURRET BELT

B12400223000  
 B12400314000 Bevel Gear Drive

## 8 - SHORT TURRET BELT

B12150113000 48"  
 B12150113600 48.5"

## 9 - CROSS CONVEYOR BELT

B12450037000

## 10 - POWER LIFT BELT

B10635317000 V Belt  
 B53520235000 Poly V

## 11 - PIT DRIVE BELT

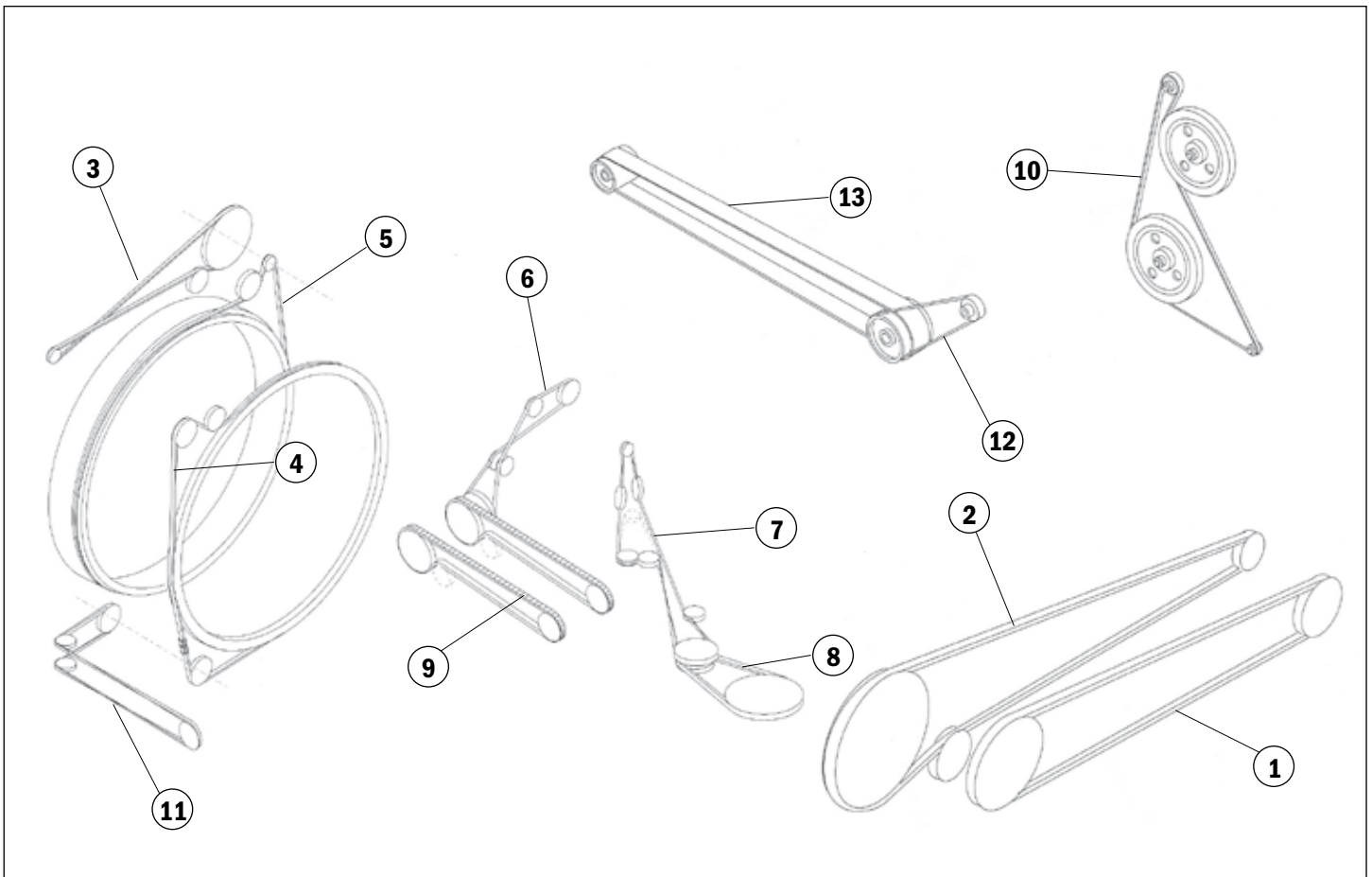
B12300082003

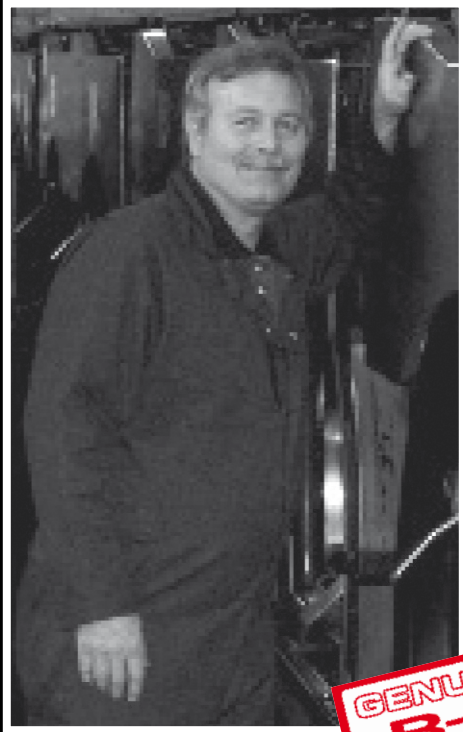
## 12 - ACCELERATOR DRIVE BELT

B10635112000 2 23/32 Pulley  
 B10635118000 2 1/32 Pulley  
 B10635113000 1 11/16 Pulley  
 B10635124000 1 1/2 Pulley

## 13 - ACCELERATOR FLAT BELT (WHITE)

B10635126000 ACC Belt Long





**STEVE FEDE**

*B-2 Parts Specialist*



## **THERE'S MORE THAN ONE WAY TO GET IN TOUCH WITH QubicaAMF.**

Making it easy for you to reach QubicaAMF is just as important to us as getting our quality products into your hands.

Contact us via phone, fax, web and e-mail and be served by people whose expertise and helpfulness make it easy for you to do business with QubicaAMF.

- ▼ To order Genuine AMF and B-2 Parts and Supplies, contact your local Genuine AMF or B-2 Distributor
- ▼ To learn more about Genuine AMF and B-2 Parts and Supplies, or to locate a distributor near you, visit [www.quibcaamf.com](http://www.quibcaamf.com)
- ▼ To speak to a live person, call 1-866-460-QAMF (7263)
- ▼ To reach us by fax, dial (804) 730-4464
- ▼ To join in on our interactive Products Forum that provides you with a direct link to discussion among peers worldwide, visit <http://forum.amfproducts.com>
- ▼ Still want to write? Send it to QubicaAMF Worldwide Consumer & Support Products, 8100 AMF Drive, Mechanicsville, VA 23111, USA



**WORLDWIDE HEADQUARTERS**

8100 AMF Drive - Mechanicsville, VA 23111 - USA - Tel. (804) 569-1000 - Fax: (804) 559-8650 - Toll free 1-866-460-QAMF (7263)

**EUROPEAN HEADQUARTERS**

Via della Croce Coperta, 15 - 40128 Bologna - Italy - Tel. +39 051.4192.611 - Fax +39 051.4192.602

**[www.qubicaamf.com](http://www.qubicaamf.com) - [info@qubicaamf.com](mailto:info@qubicaamf.com)**