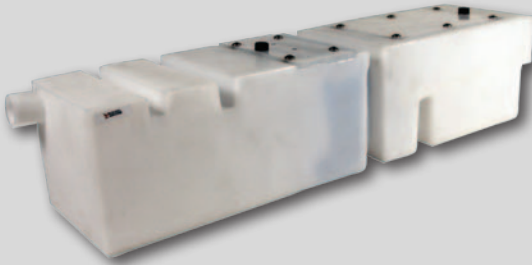




**Vacuum Motor** - See *Motors & Speed Controls*  
 Following Items are Not Pictured  
**Vacuum Housing** - 153-0204H  
**Fan Blade** - 153-0204F  
**Flexible Hose** (*Sold By The Inch*) - 154-0260



**5" Cleaner Tank Filter** - 154-0212B  
**1/2" O-Ring** - 154-0287C



**Universal In-Line Filter Assembly** - 154-8867A  
**In-Line Filter Assembly** - 154-8887 - KP | ION | KW

**Cleaner Supply Tank Only** - 154-8840 - KK | PX-C | XF  
**Complete Cleaner Tank Assembly** - 154-8680 - STD | ELT | PXS-C | EP  
**Complete Cleaner Tank Assembly** - 158-8433C - KW | KP-B | ION-B  
**Cleaner Supply Tank Only** - 158-8433 - KW | KP-B | ION-B  
**Cleaner Supply Tank Only** - 154-8894 - KP-A | ION-A  
**Expandable Supply Tank Plug (1-1/2")** - 153-0246A  
**Rubber Insert and Plug for Supply Tank** - 153-0247

**Recovery Tank** - 153-8841 - PXS-A,B | PX-A,B | XF

**Recovery Tank** - 154-8683 - PXS-C | PX-C | KK | KP-A | ELT | STD | ION-A  
**Folded Recovery Tank Filter** (*for tank 154-8683*) - 154-8684

**Recovery Tank** - 158-8434 - KP-B | ION-B

**Recovery Tank** - 158-8617 - KW

**Recovery Tank Filter** (*for tanks 158-8434 & 158-8617*) - 158-0406

**Recovery Tank Gasket** (*for tanks 158-8434 & 158-8617*) - 158-0405

## Cleaner Pump Drive Motor

154-8874 (115VAC)

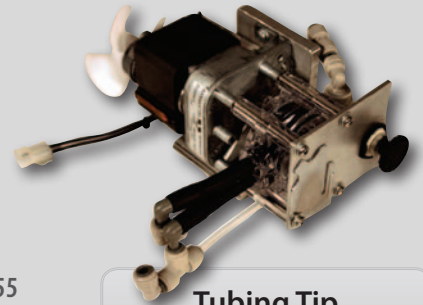
154-8875 (230VAC)

158-8404 (24VDC)

**Peristaltic® Cleaner Pump** - 154-0860A

**Norprene® Tubing** - 154-0861B

**Cleaner Volume Control Valve** - 154-1855



## Tubeing Tip

Keigel recommends you change your Norprene® tubing at least once a year to ensure consistent cleaner volume.

## LEGEND

EP	Elite PLUS	
ELT	Elite	
STD	Standard	
KW	Kustodian Walker	
IONXL	Kustodian ION XL	
ION	Kustodian ION	
KP	Kustodian PLUS	
KK	Kustodian	
XF	Crossfire	
PXS	Sanction Machine II Phoenix-S Brunswick Echo	
PX		Phoenix (Firebird)
LW		LaneWalker
LCM	LaneWalker Cleaning Machine	
XL	Excel	
DT	Dart (Breeze)	

Letter suffix indicates model type (i.e. Model B).

## Potentiometer

158-8846 - KP

158-8413 - ION | KW

## Complete Cleaner Pump Assembly

154-8859 (115VAC) - KP-A | EP

154-8859E (230VAC) - KP-A | EP

## Complete Cleaner Pump Assembly

158-8404C (24VDC) - ION | KW

158-8847 (24VDC) - KP

## Solenoid Valve (3-Way)

154-1851 (115VAC) - KP-A Only | EP

154-1852 (230VAC) - KP-A Only | EP

## Kustodian PLUS (Model A Only)

## 24VDC Cleaner Pump Conversion Kit

154-8844 (115V)

154-8845 (230V)

# Improve Your Cleaning Capabilities



**Cushion Roller With Cloth Cover** - 153-8839

Compatible with XF | KP | EP | ION | KW

Contact Tech Support for use on these models: PX | PXS | KK | STD | ELT

**Individual Cloth Cover** *(Requires 2 covers per roller)*

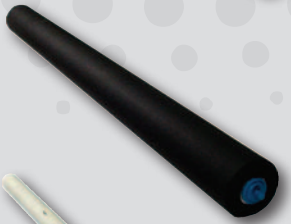
Size A - 154-8889A

Size B - 154-8889B

Size C - 154-8889C

Size D - 154-8889D

Size E - 154-8889E



**Cushion Roller** - 153-8838 - PX | PXS | KK | STD | ELT

**Cushion Roller** - 153-8026 - LW

**Cushion Roller** - 153-8238B - LCM



**PVC Take-Up Reel** - 153-8824

*(Not required with K2 Select EZ Core Cloth)*

**PVC Take-Up Reel Clamp** - 154-6248 *(Not Pictured)*



**Squeegee Blades** *(Blue pair - 42")* - 153-8204

**Complete Squeegee Assembly** *(Blue- 42")* - 153-0202

**Squeegee Blades** *(Blue pair - 45")* - 153-8204E

**Complete Squeegee Assembly** *(Blue- 45")* - 153-0202D  
ION-D | KW-D



**Squeegee Blades** *(Brown pair)* - 153-8834

**Squeegee Assembly Kit** *(Brown)* - 153-0202A



**Spray Jet Cup  
Assembly Upgrade**

154-8692



**Spray Jet Assembly**

**Tip Retainer** - 153-0218

**Spray Jet Body** - 153-6252

**Nylon Body** - 153-0217

## Spray Jet Cleaner Pumps

**Kegel Cleaner Spray Pumps \***

158-8212 (115VAC)

158-8213 (230VAC)



\* For older Standard AC and SE Machines with Pump Mounted Over Buffer Motor.

154-8651A (115VAC)

154-8652A (230VAC)

Note: This pump replaces SHURflo® & FLOJET® pumps.

## Cleaner Pump Repair Kits

**Valve/Diaphragm Kit for Kegel Pump** - 158-8212K

**Cleaner Tip & Hose** - 154-8852 - KP | EP | ION | KW

**Screen Check Valve** - 153-0220

**Outside Spray Tip** *(1501)* - 154-0007

**Inside Spray Tip** *(8003)* - 153-0207

**Inside Spray Tip** *(11003)* - 153-0207A

**Cleaner Tip Check Valve** *(Pkg of 5)*

154-0862K - KP | EP | ION | KW



## Cleaner Funnels

**Cleaner Funnel - Long Stem**  
158-8252

**Cleaner Funnel - Short Stem**  
154-8647

**Cleaner Funnel - No Stem**  
153-0252

