

Conditioner Transfer System



Conditioner Transfer Brush Assembly - 154-0866 - KP | EP | ION | KW

Buffer Brush - 154-8641 - STD | ELT | PXS-C | KK | KP | PX-C | EP | ION | XF | KW

Buffer Brush - 153-8407 - PXS-A,B | PX-A,B | XL | DT

Buffer Brush - 153-8017 - LW

Transfer Roller - 153-8408 - PX-A,B | XL | DT

Transfer Roller - 154-8338 - PX-C

Transfer Roller (2.25 diameter) - 154-8207 - PXS-A,B

Transfer Roller (1.75 diameter) - 154-8208 - PXS-A,B

Transfer Roller - 154-8608 - KK | ELT | PXS-C | STD

Transfer Roller - 158-8204 - XF

Buffer Belt - 154-9615 - STD | ELT | KK | KP | PXS-C | EP | ION

Buffer Belt - 153-9015 - PXS-A,B | PX-A,B | LW

Buffer Belt - 153-9817 - PX-C

Buffer Belt - 158-9201 - XF

Buffer Belt - 158-9026 - KW

Head Drive Belt - 154-9201 *Compatible with all applications.*

Wicks



Glueless Wick Plate Assembly

3" - 153-8103A

Replacement for glued wicks

3.125" - 153-8123

Only Compatible with PX-C

3.125" - 158-8223

Only Compatible with XF



5" - 153-8105A

Replacement for glued wicks

5.125" - 153-8125

Only Compatible with PX-C

5.125" - 158-8225

Only Compatible with XF



7" - 153-8107A

Replacement for glued wicks

7.125" - 153-8127

Only Compatible with PX-C

7.125" - 158-8227

Only Compatible with XF

10" - 153-8110A

Replacement for glued wicks

10.125" - 158-8230

Only compatible with XF

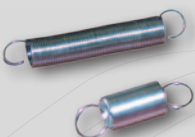
Not Pictured

45" Felt Material for Glued Wicks - 153-0005 (4")

45" Felt Material for No-Glue Wicks - 153-0005B (5")

Felt Material Stock for No-Glue Wicks - 153-0005D

(Custom cut to be purchased by the inch)



Wick Spring (0.438 OD x 2.75) - 153-2095

Wick Spring (XF Only) - 153-2740

Pattern Smoothing Pads



Pattern Smoothing Assembly - 154-8617



Velcro for Smoothing Pad
154-8617V (10 per pack)



Smoothing Pad Spring
153-2540A

1. Pulse Suppression Assembly

154-8660 - ELT | PXS-C | STD | EP

154-8216K - PXS-A,B

154-8816 - KK | KP | ION | KW

2. Pressure Gauge (60 psi) - 158-1613 (Replaces 154-1225)

3. Oil Control Valve (24VDC) - 154-1209

Not Pictured

Calibration Valve (115VAC) - 154-1210 - PXS-A,B

4. Vent Valve - 154-8817 (Electrical Vent Valve Discontinued)

5. Oil Tank Assembly with Fittings/Float

154-8682 - ELT | STD | PXS-C | KW | KP | EP | ION

Oil Tank Assembly with Fittings ONLY

154-8842 - KK

6. 5" Oil Tank Filter - 154-0212

7. Float Switch Assembly

154-1203 - XF

154-1617 - ELT | PX-C | PXS-C | KP | EP | ION | KW

154-8203 - PXS-A, B (3" Vertical for tank 154-8201C)

154-8203A - STD | ELT (7" Vertical for tank 154-8615C)

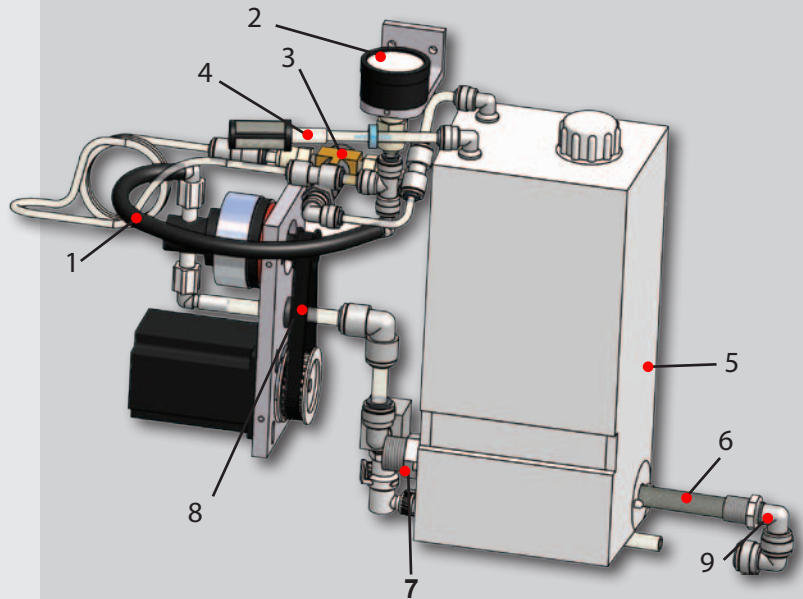
8. Belt for Conditioner Pump Motor

154-9202A (60Hz)

154-9215 (50Hz)

9. Elbow 3/8" Tube x 1/4" NPT - 154-0225

Conditioner Plate Assembly



Miscellaneous

Conditioner Head Tip & Hose Holder Assembly (includes tubing)

1-1/4" Tip Holder (PXS only) - 154-8285

3-1/2" Tip Holder (Painted Machines with Transfer Roller) - 154-8883

4-1/2" Tip Holder (Painted Machines with Transfer Brush) - 154-8851

5-1/4" Tip Holder (Upgraded Transfer Brush Models) - 154-8896

Retaining Spring for Head - 153-2713

Graduated Cylinder (25ml) - 154-0215

Graduated Cylinder (50ml) - 154-0215A

Felt Strip on Splash Guard Tank - 154-8333 - PX-C Only

Felt Kit for Transfer and Spray Jet Wall - 154-8669 - PXS-C | STD | KK | ELT

Felt for LDS Splash Guard - 154-8690 - All painted Sanction Technology Machines

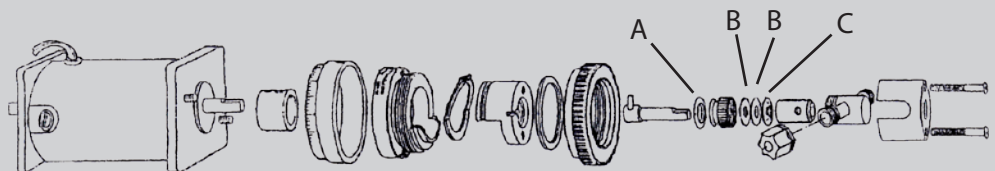
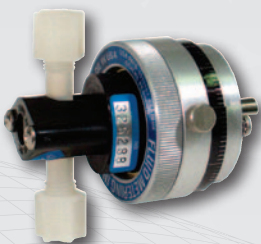
Felt Strip for Transfer Wall - 154-8669A - KP | EP | ION | KW

Oil Funnel - 153-0052 (No Stem)

Funnel with Connecting Stem for Conditioner Tank (Small) - 154-8648

Oil Pencil Tip (Molded) - 154-6832

FMI Oil Pump - 154-1214



A. O-Ring for Fluid Metering Pump (Orange) - 154-1214E

B. Seal for Fluid Metering Pump (White) - 154-1214A

C. Gland Seal for Fluid Metering Pump (Red) - 154-1214D